

“ Unique timber look joints with all the strength and easy installation you expect from a fully welded window ”



Visage®

## Visage® FLUSH SASH Colour Range

	Agate Grey	Anthracite Grey	Anthracite Grey Smooth	Black Brown	Chartwell Green	Cream	Golden Oak	Irish Oak	Pebble Grey	Rosewood	Silver Grey	Slate Grey	White
Foil on White PVC													
Foil on Foil													
Foil on White Foil													

The Halo / Flush is available in 56 and 72mm outer frames and also all are available in 150 cill, stub cill and 180 cill sizes

Call us for a fast quote **0161 339 2433**  
or email [info@visage.co.uk](mailto:info@visage.co.uk)  
Visit [visageonline.co.uk](http://visageonline.co.uk)



\* The above RAL colour references are not an exact match with the foil colours and are for guidance only. Colour images are for guidance only and the print may vary from the actual windows. The colours shown on this chart only give an indication of shade. No guarantee can be given they will exactly match the product. To see the exact colour, please ask your Visage representative for a colour swatch.

Visage®

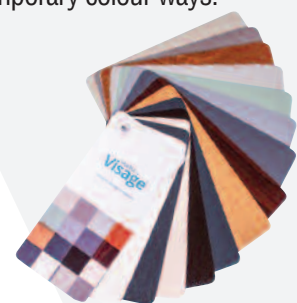
NEW VUELTA BY Visage®  
FLUSH SASH WINDOW



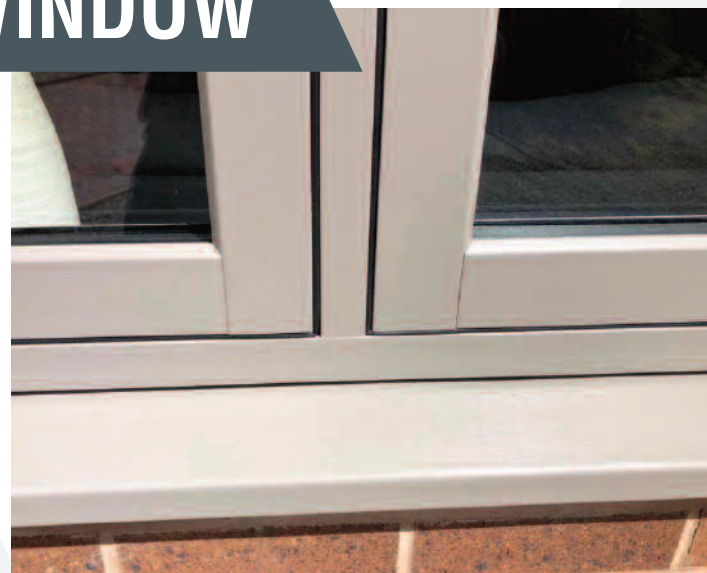
# NEW VUELTA BY Visage® FLUSH SASH WINDOW

The Vuelta Flush Sash by Visage window is the first of its kind. It offers slim frames in thirteen standard colours and authentic timber-look joints, combined with the practicality of a fully welded PVCu window.

With the sash sitting flush within the frame, Flush Sash styling emulates 19th century window design, providing the perfect options for heritage homes. For contemporary properties, the clean lines and sleek appearance of the Vuelta Flush Sash create a beautifully modern appearance, especially in our large selection of contemporary colour ways.



The unique new jointing and welding process produces the external character of a perfect timber joint without compromising performance. Inside, the precision weld is almost seamless, resulting in a strong, thermally efficient window with no risk of air leakage.



“The perfect option for heritage homes or contemporary properties”



Visage®

## Quality is in the weld detail

It's taken almost a year to develop Visage Flush Sash and it started with a completely new machine to create the perfect timber-look weld. The unique new jointing and welding process produces the external character of a perfect timber joint without compromising performance. The precision weld is strong, thermally efficient and has no risk of air leakage.

## Q-Lon outer seal

The Visage Flush Sash window features a neat Q-Lon outer seal between the sash and outerframe. Q-Lon compresses easily to fill the gap and then returns to its original shape when the sash is opened. This removes the need for an unsightly brush seal.

## Designer handles

Our range of designer handles offer a high-quality look and feel. There's a choice of finishes and a heritage range with matching dummy pegs and stays.

## Colours

We think you'll like the collection of 13 standard colour options. These feature the latest trending shades and classic favourites. The collection includes Agate Grey and natural wood stain finishes. See back page for options.



13 painted and natural wood finish colours as standard options



Classic designer handles offer a quality feel



Q-Lon outer weatherseal



Authentic timber-look welded joints



Optional colour matched Georgian Bars

